



## WATER PREPARATION INDEX

### **LINE 039**

PRESSURE REGULATORS 1/8"-1/4" .....5.2

### **LINE 035**

MODULAR LINE 1/8" .....5.9

### **LINE 042**

MODULAR LINE 1/4" .....5.13

### **LINE 095**

PRESSURE REGULATORS 1" .....5.17

# LINE 039 1/8"-1/4" | PRESSURE REGULATORS FOR WATER



## GENERAL FEATURES

Aircomp microregulators are available in a wide range of models so as to fulfill several application requirements.

The internal balanced valve guarantees high regulation stability upon variation of the upstream pressure.

An accurate designing of the internal opening system provides regulation speed and big flow rate.

The used polymers and internal components make this product extremely versatile for different application with compressed air.

## GENERAL TECHNICAL DATA

<b>Fluid</b>	water, non-corrosive liquids
<b>Working temperature (a 10 bar)</b>	+2 / +50°C
<b>Connessioni IN - OUT</b>	1/8"G; 1/4"G
<b>Fixing type</b>	panel mounted or with bracket
<b>Mounting position</b>	any
<b>Tamper-proof knob</b>	
<b>Version with lock</b>	upon request
<b>Pre-set version</b>	upon request

## GUIDE TO REFERENCES

MR 1/4" 039 08 R 2V POM FG

Product <b>MR</b> = Microregulators	<b>FG</b> = certified materials
Connection <b>1/8"</b> = G 1/8" <b>1/4"</b> = G 1/4"	Options = standard <b>INOX</b> = inserti INOX <b>POM</b> = body without metal inserts <b>SRU</b> = Unidirectional quick exhaust with seals in EPDM <b>EPDM</b> = EPDM
Line <b>039</b>	Body type <b>2V</b> = 2 ways <b>4V</b> = 4 ways
Pressure range <b>02</b> = 0 - 2 Bar <b>04</b> = 0 - 4 Bar <b>08</b> = 0 - 8 Bar <b>12</b> = 0 - 12 Bar	Version <b>R</b> = relieving <b>A</b> = Non relieving

# LINE 039 1/8"-1/4" | PRESSURE REGULATORS

## PRESSURE REGULATORS LINE 039

The expertise we have gained over many years in planning and production of pressure regulators has lead us to constantly improve our products. Our customers urge us to develop even more specific and customised solutions. Nowadays we can offer a broad range of regulators for many applications.

### WATER AND FLUIDS REGULATION

#### LINE 039 NON-RELIEVING REGULATOR FOR WATER



Features: big flow rate, stability

#### LINE 039 POM WITH CERTIFIED MATERIALS



Features: compatibility and precision

#### LINE 039 INOX WITH CERTIFIED MATERIALS



Features: compatibility and precision

#### LINE 039 EPDM NON-RELIEVING REGULATOR FOR LIQUIDS



Features: compatibility with brake fluid

### COMPRESSED AIR REGULATION

#### LINE 039 REGULATOR FOR COMPRESSED AIR



Features: big flow rate, stability

#### LINE 039 SRU QUICK EXHAUST REGULATOR



Feature: high exhaust speed

#### LINE 039 FA-RM AIR ESCAPE REGULATOR WITH INCREASED RELIEVING



Feature: high sensitivity and precision

#### LINE 039 EPDM AIR REGULATOR WITH EPDM SEALS



Feature: resistance against chemical aggressions



#### LK VERSION WITH LOCK

The regulator is adjusted at the required pressure, the knob is blocked and locked. Pressure modification is possible only by opening the lock.



#### PRE-SET VERSION

The regulator is preset at the pressure value required by the customer. A tamper-proof knob is mounted in order to avoid any modification to the preset pressure.

AIR PREPARATION

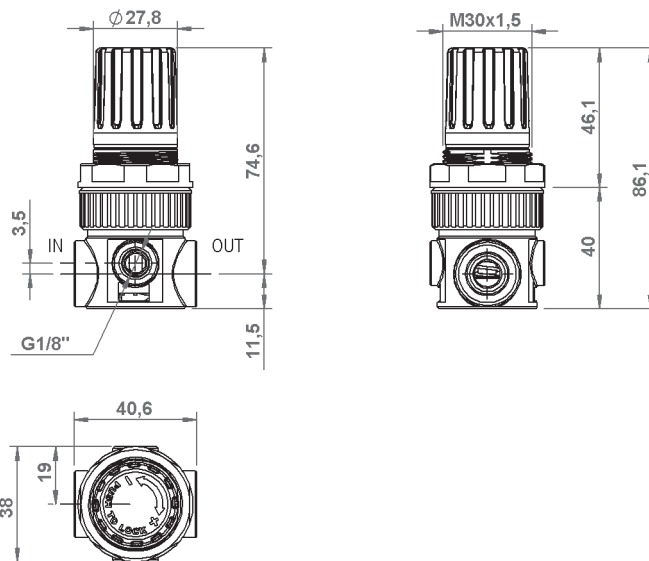
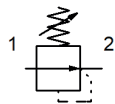
VALVES

CYLINDERS

FITTINGS

WATER PREPARATION

# LINE 039 1/8"-1/4" | PRESSURE REGULATORS FOR WATER



## GENERAL FEATURES

Microregulator featuring high performance with balanced valve for ensuring great stability even upon variation of the upstream pressure, and low load loss.

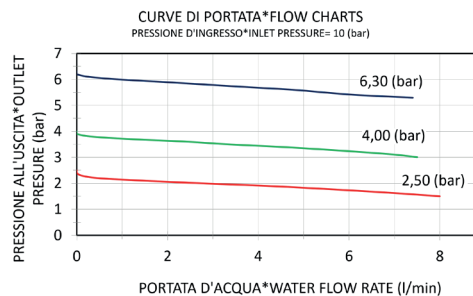
Non relieving for water application.

Knob with pressure locking device.

Equipped with nut and nr. 1 plug.

## GENERAL TECHNICAL DATA

<b>Pressure range</b>	0-2; 0-4; 0-8; 0-12 Bar
<b>Maximum inlet pressure</b>	16 bar
<b>Water Reference Flow rate</b>	(P1= 6,3 bar) : P= 1bar : 7 NI/min
<b>Working temperature max (a 10 bar)</b>	+50°C
<b>Max Torque G1/8" IN-OUT</b>	20 Nm
<b>Max Torque G1/4" IN-OUT</b>	25 Nm
<b>Max torque gauge port</b>	1 Nm
<b>Weight</b>	0,100 Kg

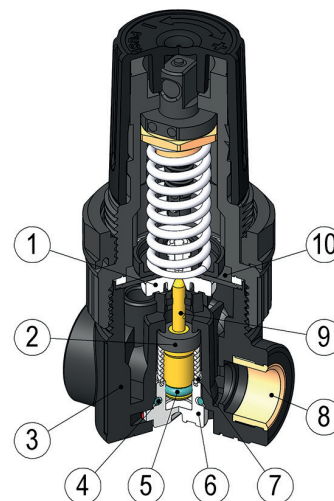


## ORDERING CODE

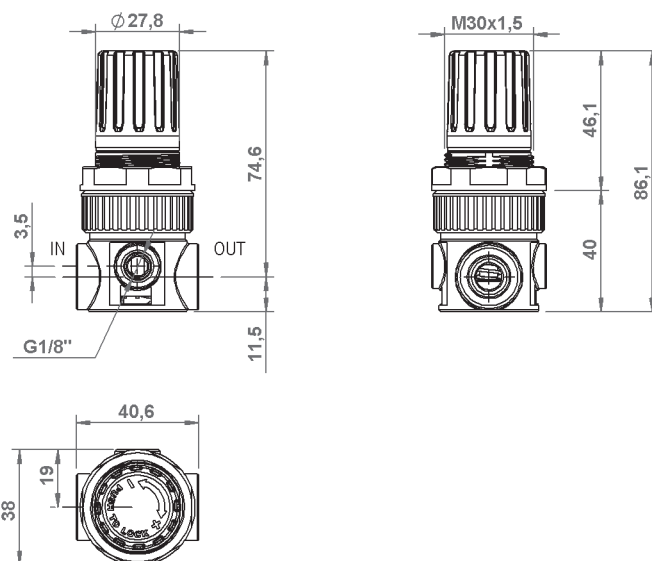
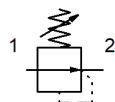
CODE	REF.
039.00.00201	MR 1/8" 039 02 A
039.00.00202	MR 1/8" 039 04 A
039.00.00203	MR 1/8" 039 08 A
039.00.00204	MR 1/8" 039 12 A
039.00.00601	MR 1/4" 039 02 A
039.00.00602	MR 1/4" 039 04 A
039.00.00603	MR 1/4" 039 08 A
039.00.00604	MR 1/4" 039 12 A

## USED MATERIALS

- |                        |                                |
|------------------------|--------------------------------|
| 1. Diaphragm pin- POM  | 6. Plug- POM                   |
| 2. Valve sealing- NBR  | 7. Valve spring- INOX AISI 316 |
| 3. Regulator body- POM | 8. Inserts- BRASS OT58         |
| 4. O-Ring plug- NBR    | 9. Valve body- BRASS OT58      |
| 5. O-Ring valve- NBR   | 10. Diaphragm- NBR             |



# LINE 039 1/8"-1/4" | EPDM REGULATOR FOR LIQUIDS



## GENERAL FEATURES

In this version all the elastomers in contact with fluid (seals, diaphragm, etc.) are made in EPDM so as to guarantee the maximum resistance against chemical aggressions.

Microregulator delivering high performance with balanced valve for ensuring great stability, even upon variation of the upstream pressure, and low load loss.

Non relieving for liquid application.

Application: contact with brake fluid, other liquids compatible with EPDM (\*)

Knob with pressure locking device.

Equipped with nut and nr. 1 plug.

(\*) for further information, please contact our Technical Dept.

## GENERAL TECHNICAL DATA

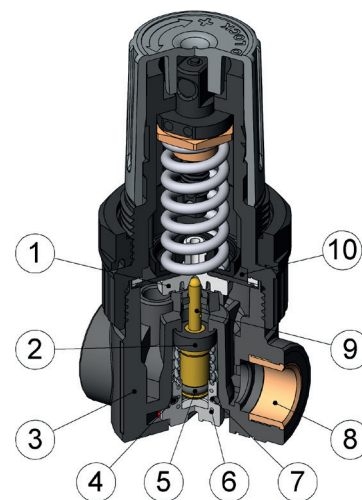
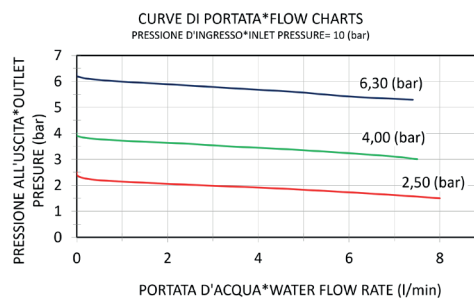
<b>Pressure range</b>	0-2; 0-4; 0-8; 0-12 Bar
<b>Maximum inlet pressure</b>	16 bar
<b>Water Reference Flow rate</b>	(P1= 6,3 bar) : P= 1bar : 7 NI/min
<b>Working temperature max (a 10 bar)</b>	+50°C
<b>Max Torque G1/8" IN-OUT</b>	20 Nm
<b>Max Torque G1/4" IN-OUT</b>	25 Nm
<b>Max torque gauge port</b>	1 Nm
<b>Weight</b>	0,100 Kg

## ORDERING CODE

CODE	REF.
<b>039.00.00304</b>	MR 1/4" 039 02A EPDM
<b>039.00.00305</b>	MR 1/4" 039 04A EPDM
<b>039.00.00306</b>	MR 1/4" 039 08A EPDM
<b>039.00.00307</b>	MR 1/4" 039 12A EPDM

## USED MATERIALS

- |                                |  |
|--------------------------------|--|
| 1. <b>Diaphragm pin</b> - POM  | 6. <b>Plug</b> - POM                   |
| 2. <b>Valve sealing</b> - EPDM | 7. <b>Valve spring</b> - INOX AISI 316 |
| 3. <b>Regulator body</b> - POM | 8. <b>Inserts</b> - Brass OT58         |
| 4. <b>O-Ring plug</b> - EPDM   | 9. <b>Valve body</b> - Brass OT58      |
| 5. <b>O-Ring valve</b> - EPDM  | 10. <b>Diaphragm</b> - EPDM            |



AIR PREPARATION

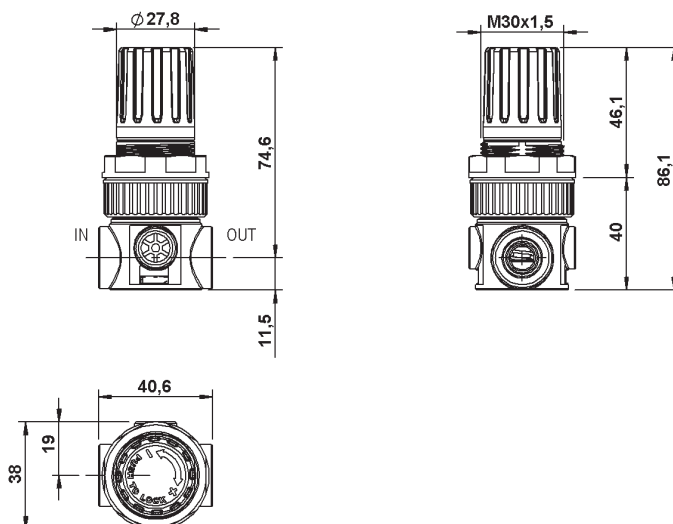
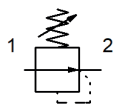
VALVES

CYLINDERS

FITTINGS

WATER PREPARATION

# LINE 039 1/4" INOX | WATER REGULATORS WITH CERTIFIED MATERIALS



## GENERAL FEATURES

Pressure regulator for liquids realized with certified materials.  
Metal components in contact with fluid made in AISI 316L stainless steel.

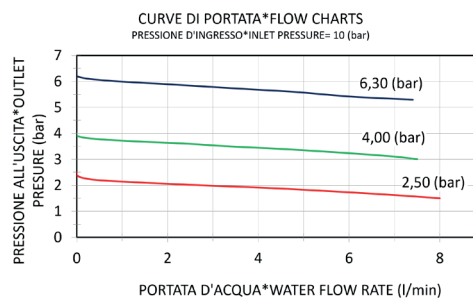
Balanced valve.

Non relieving version for liquids application.

Konob with pressure locking device.

## GENERAL TECHNICAL DATA

<b>Pressure range</b>	0-2; 0-4; 0-8; 0-12 Bar
<b>Maximum inlet pressure</b>	16 bar
<b>Water Reference Flow rate</b>	(P1= 6,3 bar) : P= 1bar : 7 NI/min
<b>Working temperature max (a 10 bar)</b>	+50°C
<b>Fluid max. temperature (water)</b>	+23°C
<b>2-way body without gauge ports</b>	
<b>Max Torque G1/8" IN-OUT</b>	20 Nm
<b>Max Torque G1/4" IN-OUT</b>	25 Nm
<b>Weight</b>	0,100 Kg



## ORDERING CODE

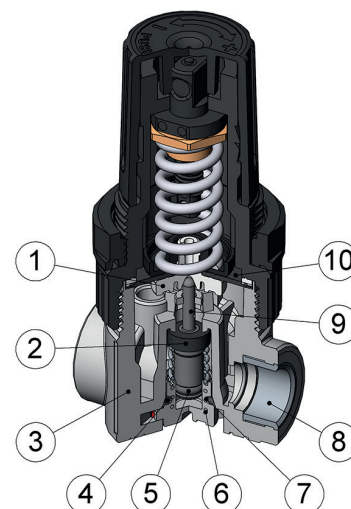
CODE	REF.
039.00.00227	MR 1/8" 039 02A INOX 2V FG
039.00.00228	MR 1/8" 039 04A INOX 2V FG
039.00.00229	MR 1/8" 039 08A INOX 2V FG
039.00.00230	MR 1/8" 039 12A INOX 2V FG
039.00.00272	MR 1/4" 039 02A INOX 2V FG
039.00.00243	MR 1/4" 039 04A INOX 2V FG
039.00.00238	MR 1/4" 039 08A INOX 2V FG

## USED MATERIALS

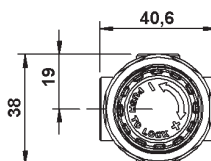
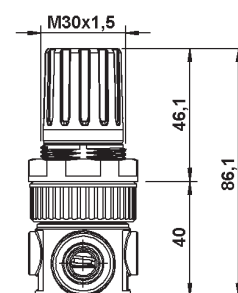
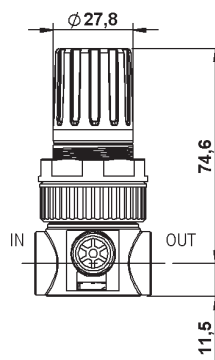
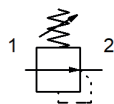
- |                         |                                |
|-------------------------|--------------------------------|
| 1. Diaphragm pin- POM*  | 6. Plug- POM*                  |
| 2. Valve sealing- EPDM* | 7. Valve spring- INOX AISI 316 |
| 3. Regulator body- POM* | 8. Inserts- INOX AISI 316      |
| 4. O-Ring plug- NBR*    | 9. Valve body- INOX AISI 316   |
| 5. O-Ring valve- NBR*   | 10. Diaphragm- EPDM + Nylon*   |

\*All materials in contact with fluid are certified.

For more information please contact our sales department.



# LINE 039 1/4" POM | WATER REGULATOR WITH CERTIFIED MATERIALS



## GENERAL FEATURES

Pressure regulator for liquids realized with certified materials. Brass components in contact with fluid undergo a chemical nickel-plating treatment that is NFS/ANSI51 certified.

Balanced valve.

Non relieving version for liquids application.

Konob with pressure locking device.

Available with 2-way body (without gauge ports) or 4-way.

## GENERAL TECHNICAL DATA

<b>Pressure range</b>	0-2; 0-4; 0-8; 0-12 Bar
<b>Maximum inlet pressure</b>	16 bar
<b>Water Reference Flow rate</b>	(P1= 6,3 bar) : P= 1bar : 6,75 NI/min
<b>Working temperature max (a 10 bar)</b>	+50°C
<b>Fluid max. temperture (water)</b>	+23°C
<b>Available with 2-way or 4-way body</b>	
<b>Max Torque G1/4" IN-OUT</b>	1 Nm
<b>Max tourque gauge port</b>	1 Nm
<b>Weight</b>	0,100 Kg

## ORDERING CODE

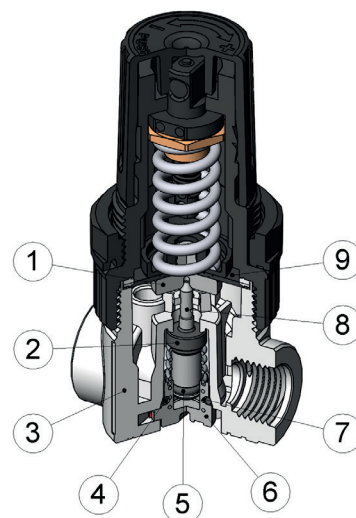
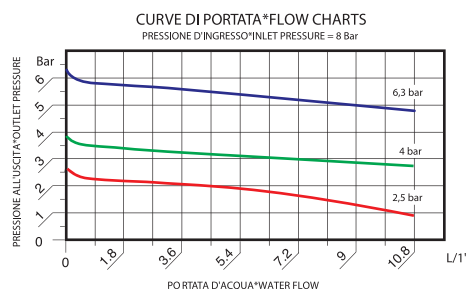
CODE	REF.
<b>039.00.00250</b>	MR 1/4" 039 02A 2V POM FG
<b>039.00.00251</b>	MR 1/4" 039 04A 2V POM FG
<b>039.00.00252</b>	MR 1/4" 039 08A 2V POM FG
<b>039.00.00253</b>	MR 1/4" 039 12A 2V POM FG
<b>039.00.00246</b>	MR 1/4" 039 02A 4V POM FG
<b>039.00.00247</b>	MR 1/4" 039 04A 4V POM FG
<b>039.00.00248</b>	MR 1/4" 039 08A 4V POM FG
<b>039.00.00249</b>	MR 1/4" 039 12A 4V POM FG

## USED MATERIALS

- |  |   |
|--|---|
| 1. <b>Diaphragm pin</b> - brass + nickel plating (NSF51) | 5. <b>O-Ring valve</b> - NBR*                         |
| 2. <b>Sealing valve</b> - TPC-ET*                        | 6. <b>Plug</b> - POM*                                 |
| 3. <b>Regulator body</b> - POM*                          | 7. <b>Valve spring</b> - S.S. AISI 316                |
| 4. <b>O-Ring plug</b> - NBR*                             | 8. <b>Valve body</b> - brass + nickel plating (NSF51) |
|  | 9. <b>Diaphragm</b> - EPDM + Nylon*                   |

\*All materials in contact with fluid are certified.

For more information please contact our sales department.



AIR PREPARATION

VALVES

CYLINDERS

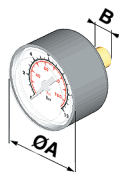
FITTINGS

WATER PREPARATION



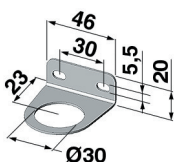
# LINE 039 MR 1/8"-1/4" | SPARE PARTS

## GAUGE



CODE	Bar	Psi	A	B	CH.
<b>A38.00.00026</b>	0-12	0-175	40	G1/8"	14
<b>A38.00.00055</b>	0-6	0-85	40	G1/8"	12
<b>A38.00.00114</b>	0-2,5	0-36	40	G1/8"	12

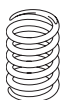
## BRACKET



### CODE

C38.00.00069

## REGULATION SPRING



CODE	LINE	PRESSURE RANGE
<b>A38.00.00133</b>	039	0-1 Bar
<b>A38.00.00132</b>	039	0-2 Bar
<b>A38.00.00131</b>	039	0-4 Bar
<b>A38.00.00130</b>	039	0-8 Bar
<b>A38.00.00129</b>	039	0-10 Bar
<b>A38.00.00128</b>	039	0-12 Bar

## TECHNOPOLYMER PLUG 1/8"



### CODE

**B38.00.00018**

### LINE

039

## TECHNOPOLYMER 1/8 PLUG. MATERIAL CERTIFIED



### CODE

**B38 00 00139**

### LINE

039

## BRASS 1/8 PLUG (NICKEL PLATING NSF/ANSI51 CERTIFIED)



### CODE

**A39 00 00056**

### LINE

039

## TAMPER PROOF KNOB



### CODE

**B39 00 00007**

### LINE

039 - 042



# LINE 035 1/8" | MODULAR UNIT



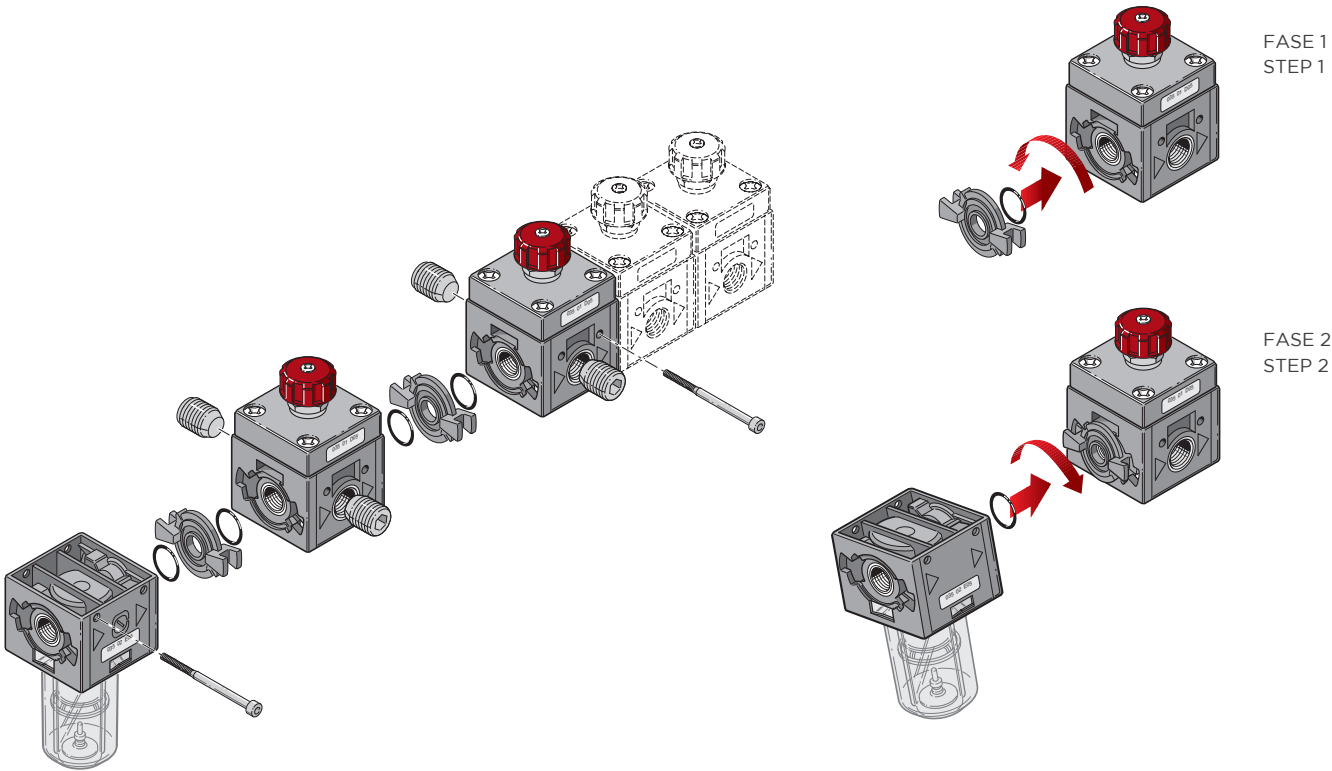
### GENERAL FEATURES

Modular units Line 035 are particularly compact and have been designed for the filtering and regulation of fluids. They are available in version for compressed and also for water (non relieving). The combination of filter and regulator also in battery set assembly endows great application flexibility to this Line.

### GENERAL TECHNICAL DATA

<b>Fluid</b>	compressed air - water
<b>Working temperature max (a 10 bar):</b>	+50°C
<b>Connections IN-OUT</b>	1/8"G
<b>Assembling type</b>	Assembling kit
<b>Mounting position</b>	see singol components
<b>Wall fixing</b>	through holes on the body
<b>Battery set</b>	regulator

### MODULAR ASSEMBLING



AIR PREPARATION

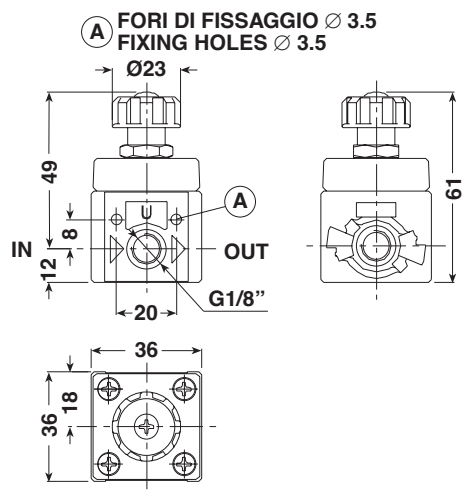
VALVES

CYLINDERS

FITTINGS

WATER PREPARATION

# LINE 035 1/8" | MODULAR REGULATOR FOR WATER



## GENERAL FEATURES

Modular regulator with diaphragm operation and non-balanced valve.

Extremely compact for application in small spaces.

Non relieving version for water.

It can be wall mounted using the preset holes.

Equipped with nr. 1 plug.

## GENERAL TECHNICAL DATA

<b>Pressure range</b>	0-6 Bar
<b>Maximum inlet pressure</b>	10 bar
<b>Water Reference Flow rate</b>	(P1= 6,3 bar P= 1bar) : 3,75 NI/min
<b>Working temperature max (a 10 bar)</b>	+50°C
<b>Max Torque G1/8" IN-OUT</b>	20 Nm
<b>Weight</b>	0,080 kg

## ORDERING CODE

## MICROREGULATORS

CODE	REF.
<b>035.01.00006</b>	MR 1/8" 035 06 A

## MICROREGULATOR FOR BATTERY

CODE	REF.
<b>035.01.00003</b>	MR 1/8" 035 06 A B

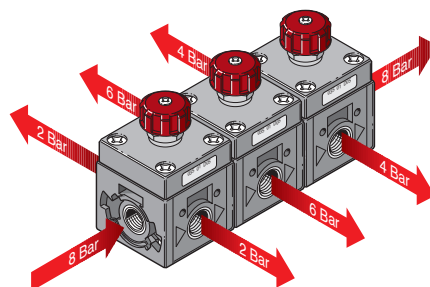
For the relieving models, please see Air Preparation section.

## GUIDE TO REFERENCES

MR 1/8" 035 06 R

Product	Version
<b>MR</b> = Microregulators	= Standard
	<b>B</b> = For battery
Connection	Version
<b>1/8"</b> = G 1/8"	<b>R</b> = Relieving
	<b>A</b> = Non relieving (see Water Preparation range)
Line	Range of pressure
<b>035</b>	<b>06</b> = 0 - 6 Bar

## REGULATOR FOR BATTERY



# LINE 035 1/8" | MODULAR FILTER FOR WATER



## GENERAL FEATURES

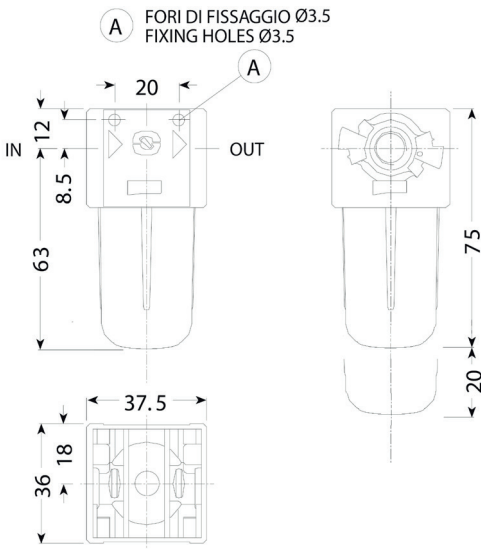
Compact modular Filter for water, connections 1/8".  
It can be wall mounted using the holes preset on the body.  
Bowl made from transparent hardened polyamide without drain (closed).

## GENERAL TECHNICAL DATA

Fluid	acqua
Max working pressure	7 Bar
Filtering degree	80 micron
Water Reference Flow rate	(P1= 10 bar P= 1bar) : 11 NI/min
Working temperature max (a 7 bar)	+50°C
Max Torque G1/8" IN-OUT	20 Nm
Weight	0,050 kg

## ORDERING CODE

CODE	REF.
035.02.00001	F 1/8" 035 80 (FOR WATER)



## GUIDE TO REFERENCES

F 1/8" 035 20 TT SS

Product  
F = Filter

Connection  
1/8" = G 1/8"

Line  
035

Condensate Drain  
SS = Manual  
\_\_ = \_\_ Closed bowl

Bowl  
TT = Transparent

Filtering element  
5 = 5 micron  
20 = 20 micron  
80 = 80 micron

AIR PREPARATION

VALVES

CYLINDERS

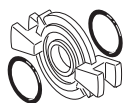
FITTINGS

WATER PREPARATION

# LINE 035 1/8" | SPARE PARTS

## ACCESSORIES

### KIT ASSEMBLING UNITS



CODE	PROD.
<b>C35.01.00018</b>	MR - F - MF

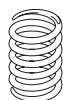
### PLUG G1/8"



CODE	PROD.
<b>B38.00.00018</b>	MR - MR P

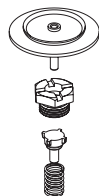
## SPARE PARTS

### REGULATION SPRING



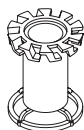
CODE	LINE	SET REGULATION
<b>A35.01.00006</b>	035	0÷6 Bar

### DIAPHRAGM WITH VALVE



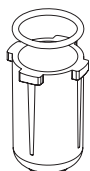
CODE	PROD.	VERSION
<b>C38.00.00049</b>	MR	RELIEVING
<b>C38.00.00050</b>	MR - MR P	NON RELIEVING

### FILTERING ELEMENT



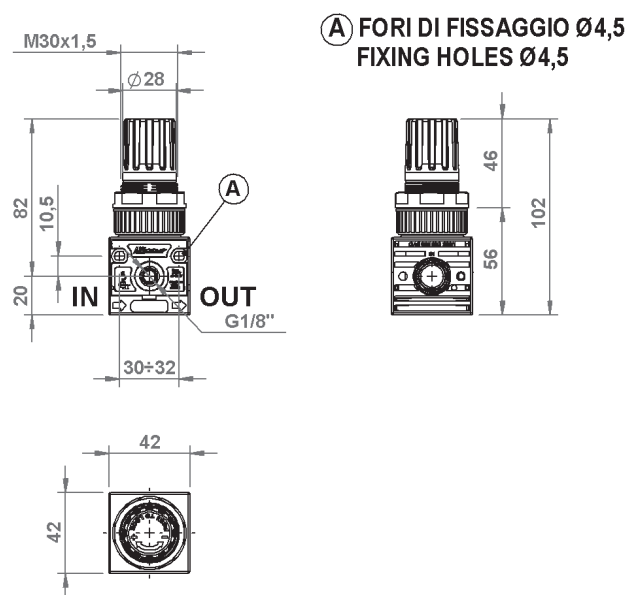
CODE	PROD.	VERSION
<b>C35.02.00006</b>	F	20 Micron
<b>C35.02.00010</b>	F	5 Micron
<b>C35.02.00005</b>	F	80 Micron

### BOWL FOR FILTER



CODE	PROD.	VERSION
<b>C35.02.00004</b>	F - MF	SS
<b>C35.03.00001</b>	F	for water

# LINE 042 1/4" | MODULAR REGULATOR FOR WATER



## GENERAL FEATURES

Modular regulator with balanced valve ensuring big flow rate and low load loss.

Non relieving version for water.

Available also in version for battery assembling with common inlet and outlet ports having independent regulation.

Knob with locking pressure device.

Equipped with nr. 1 plug.

## GENERAL TECHNICAL DATA

<b>Pressure range</b>	Pressure range
<b>Maximum inlet pressure</b>	16 Bar
<b>Water Reference Flow rate</b>	(P1= 6,3 bar P= 1bar)
<b>Regulator</b>	9 NI/min
<b>Regulator for battery</b>	5 NI/min
<b>Working temperature max (a 10 bar)</b>	+50°C
<b>Max Torque G1/4" IN-OUT</b>	25 min
<b>Max torque gauge port</b>	1 Nm
<b>Weight</b>	0,125 kg

## GUIDE TO REFERENCES

R 1/4" 042 08 A

Product  
R = Regulator

Connection  
1/4" = G 1/4"  
1" = G 1"

Line  
042  
095

Version  
= Standard  
B = For battery

Version  
A = Non relieving (water)

Range of pressure  
04 = 0 - 4 Bar  
08 = 0 - 8 Bar  
12 = 0 - 12 Bar

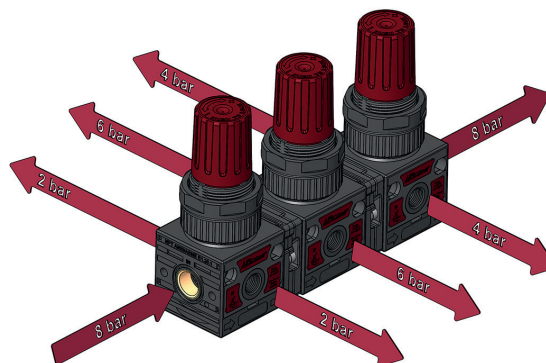
## REGULATOR

CODE	REF.
042.01.00027	R 1/4" 042 02 A
042.01.00026	R 1/4" 042 04 A
042.01.00028	R 1/4" 042 08 A
042.01.00009	R 1/4" 042 12 A

## REGULATOR FOR BATTERY

CODE	REF.
042.01.00056	R 1/4" 042 02 AB
042.01.00057	R 1/4" 042 04 AB
042.01.00058	R 1/4" 042 08 AB

## REGULATOR FOR BATTERY



# LINE 042 1/4" | MODULAR FILTER FOR WATER

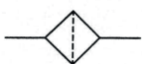
AIR PREPARATION

VALVES

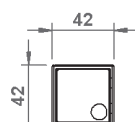
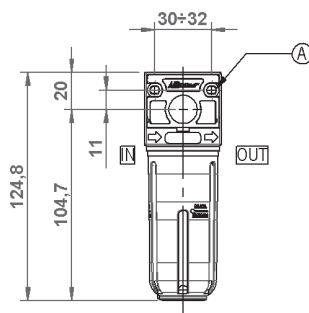
CYLINDERS

FITTINGS

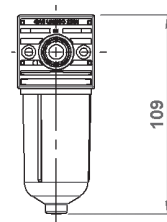
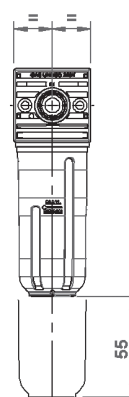
WATER PREPARATION



① FORI DI FISSAGGIO Ø4,5  
FIXING HOLES Ø4,5



Versione PE e TT  
PE and TT version



Versione TC  
TC version

## GENERAL FEATURES

Modular Filter 1/4" for water.

It can be wall mounted through the holes prearranged on the body.  
Bowl made from hardened polyamide available in following configurations:

TT = transparent; PE = outer guard; TC = short transparent.

## GENERAL TECHNICAL DATA

Maximum inlet pressure	16 Bar
Filtering degree	80 micron
Water Reference Flow rate	(P1= 10 bar P= 1bar) : 18 NI/min
Working temperature max (a 10 bar)	+50°C
Max Torque G1/4" IN-OUT	25 Nm
Weight	0,095 Kg

## GUIDE TO REFERENCES

F 1/4" 042 80 TT SS

Product

F = Filter

Connection

1/4" = G 1/4"

Line

042

Condensate Drain

SS = Manual  
= Closed bowl

Bowl

TT = Transparent  
TC = Short bowl

Filtering element

5 = 5 micron  
20 = 20 micron  
80 = 80 micron

## ORDERING CODE

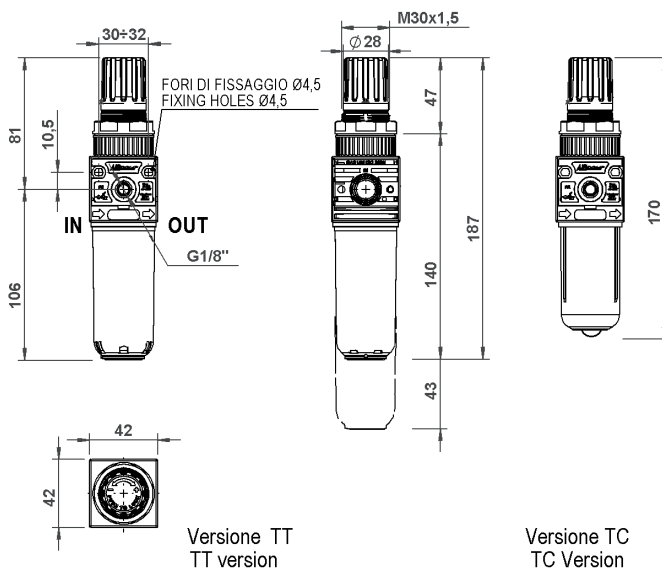
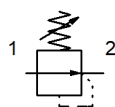
### FILTER

CODE	REF.
042.02.00192	F 1/4" 042 80 TT

### FILTER SHORT BOWL

CODE	REF.
042.2.00007	F 1/4" 042 80 TC

# LINE 042 FR 1/4" | FILTER REGULATOR FOR WATER



## GENERAL FEATURES

Modular Filter Regulator featuring high performance and low load loss.

Non relieving version and closed bowl for water application.

It can be wall mounted through the preset holes.

Knob with pressure locking device.

Bowl made from hardened polyamide available in following configurations:

TT = transparent; PE = outer guard; TC = short transparent.

## GENERAL TECHNICAL DATA

<b>Pressure range</b>	0-4; 0-8; 0-12 Bar
<b>Maximum inlet pressure</b>	16 bar
<b>Filtering degree</b>	80 micron
<b>Reference flow rate</b>	(P1= 6,3 bar P= 1bar) :9 NI/min
<b>Working temperature max (a 10 bar)</b>	+50°C
<b>Max Torque G1/4" IN-OUT</b>	25 Nm
<b>Max torque gauge port</b>	1 Nm
<b>Weight</b>	0,125 kg

## ORDERING CODE

### FILTER REGULATOR

CODE	REF.
<b>042.04.00141</b>	FR 1/4" 042 80 04 A TT
<b>042.04.00140</b>	FR 1/4" 042 80 08 A TT

### FILTER REGULATOR SHORT BOWL

CODE	REF.
<b>042.04.00274</b>	FR 1/4" 042 80 04 A TC
<b>042.04.00261</b>	FR 1/4" 042 80 08 A TC

## GUIDE TO REFERENCES

FR 1/4" 042 80 08 A TT

Product

**FR** = Filter regulator

Connection

**1/4"** = G 1/4"

Line

**042**

Filtering element

**5** = 5 micron

**80** = 80 micron

Bowl

**TT** = Transparent (Line 042 only)

**TC** = Short transparent (Line 042 only)

Version

**A** = Non relieving

Range of pressure

**04** = 0-4 bar

**08** = 0-8 bar

**12** = 0-12 bar

AIR PREPARATION

VALVES

CYLINDERS

FITTINGS

WATER PREPARATION



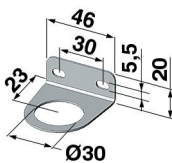
# LINE 042 1/4" | ACCESSORIES

## PLUG G1/8"



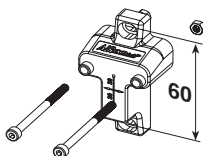
CODE	CONNECTION
<b>B38.00.00018</b>	G1/8"
<b>A42.01.00010</b>	G1/4" (air takeoff)

## BRACKET



CODE
<b>C38.00.00069</b>

## "T" BRACKET KIT



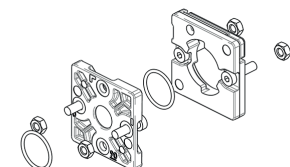
CODE
<b>C42.05.00001</b>

## KIT ASSEMBLING UNITS



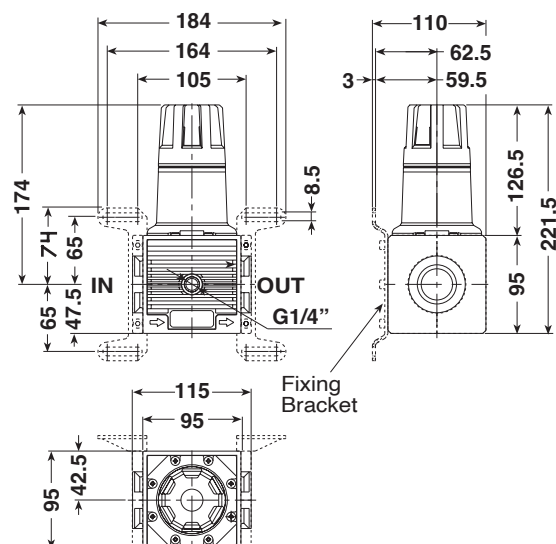
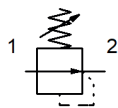
CODE	PROD.
<b>C40.06.00001</b>	FR+L

## SLIM KIT FOR BATTERY SET ASSEMBLING



CODE	PRODUCT
<b>C42.06.00007</b>	ALL

# LINE 095 1" R | REGULATORS FOR WATER



## GENERAL FEATURES

Modular Regulator with balanced valve ensuring high performance and low load loss.

Big flow rate.

Non relieving version for water application.

Knob with pressure locking device.

Equipped with nr. 1 plug 1/4".

## GENERAL TECHNICAL DATA

<b>INLET-OUTLET connections</b>	1"
<b>Pressure range</b>	0-4; 0-8; 0-12 Bar
<b>Working pressure</b>	0 - 12,5 Bar
<b>Water Reference Flow rate</b>	(P1= 6,3 bar P= 1bar) : 225 NI/min
<b>Working temperature max (a 10 bar)</b>	+50°C
<b>Max Torque IN-OUT</b>	1" - 80 Nm
<b>Max torque gauge port</b>	10 Nm
<b>Peso</b>	1,721 kg

## ORDERING CODE

CODE	REF.
<b>095.01.00006</b>	R 1" 095 04 A
<b>095.01.00005</b>	R 1" 095 08 A

## GUIDE TO REFERENCES

R 1/4" 042 08 A

Product  
**R** = Regulator

Connection  
**1/4"** = G 1/4"  
**1"** = G 1"

Line

**042**  
**095**

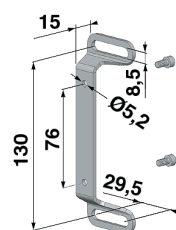
Version  
= Standard  
**B** = For battery

Version  
**A** = Non relieving (water)

Range of pressure

**04** = 0 - 4 Bar  
**08** = 0 - 8 Bar  
**12** = 0 - 12 Bar

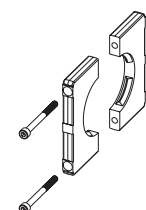
## SIDE FIXING BRACKET



CODE PROD.

**C95.01.00018** R

## WALL FIXING KIT

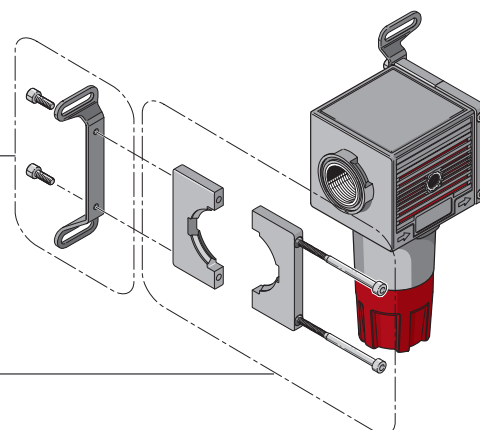


CODE PROD.

**C95.01.00015** R

Wall fixing bracket

Wall fixing kit



AIR PREPARATION

VALVES

CYLINDERS

FITTINGS

WATER PREPARATION

# LINE WATER PREPARATION | SPARE PARTS

## REGULATION SPRING



CODE	LINE	PRODUCT	PRESSURE RANGE
<b>A35.01.00006</b>	035	MR	0÷6 Bar
<b>A38.00.00133</b>	039 - 042	MR-R-FR	0÷1 Bar
<b>A38.00.00132</b>	039 - 042	MR-R-FR	0÷2 Bar
<b>A38.00.00131</b>	039 - 042	MR-R-FR	0÷4 Bar
<b>A38.00.00130</b>	039 - 042	MR-R-FR	0÷8 Bar
<b>A38.00.00129</b>	039 - 042	MR-R-FR	0÷10 Bar
<b>A38.00.00128</b>	039 - 042	MR-R-FR	0÷12 Bar
<b>A95.01.00016</b>	095	R	0÷4 Bar
<b>A95.01.00017</b>	095	R	0÷8 Bar

## DIAPHRAGM



CODE	LINE	PRODUCT	MODEL
<b>C38.00.00050</b>	035	MR	NON RELIEVING
<b>C38.00.00075</b>	039 - 042 (UPGRADE)	MR-R-FR	NON RELIEVING
<b>C39.00.00077</b>	039 INOX	MR INOX	NON RELIEVING
<b>C39.00.00088</b>	039 POM	MR POM	NON RELIEVING
<b>C39.00.00095</b>	039	EPDM	NON RELIEVING
<b>C42.01.00027</b>	042	R-FR	NON RELIEVING
<b>C95.01.00027</b>	095	R	NON RELIEVING

## TRANSPARENT BOWL



CODE	LINE	PRODUCT	MODEL
<b>C35.03.00001</b>	035	F acqua	without drain
<b>C40.03.00082</b>	042	F TT acqua	without drain
<b>C40.03.00047</b>	042	F TC acqua	without drain

## FILTERING ELEMENT FOR FILTER



CODE	LINE	PRODUCT	FILTERING DEGREE
<b>C35.02.00005</b>	035	F acqua	80 micron
<b>C40.02.00102</b>	042	F acqua	80 micron

## FILTERING ELEMENT KIT WITH VALVE (FOR FR)



CODE	LINE	PRODUCT	FILTERING DEGREE
<b>C42.04.00012</b>	042	FR (water)	80 micron